



GOVERNMENT OFFICE  
FOR THE EAST OF ENGLAND

# Understanding Local Area Agreements – *and how to influence them*

Ian Jacobs  
GO-East



GOVERNMENT OFFICE  
FOR THE EAST OF ENGLAND

# THE LGWP – STRONG AND PROSPEROUS COMMUNITIES



- a stronger role for local authorities to lead their communities, shape their areas and respond to local needs
- more space for local authorities and other local service providers to innovate and respond to local needs

In exchange for:

- more bottom-up accountability
- stronger local authority leadership
- better and more efficient services
- tougher intervention when things go wrong



GOVERNMENT OFFICE  
FOR THE EAST OF ENGLAND

# New relationship between central and local government

- Less burdensome performance framework  
- down from 1,200 indicators to 198!
- Local Area Agreements - the only place where central government will negotiate targets with local government and its partners
- Funding - increased flexibilities



GOVERNMENT OFFICE  
FOR THE EAST OF ENGLAND

Local Challenges and Ambitions  
Sustainable Community  
Strategy

Local consultation through  
the LSP with Partners and  
Stakeholders

LSP view of local priorities

Negotiation and  
agreement

16 statutory education  
and early years targets

CSR07 national priority  
outcomes &  
198 national indicators

Cross-Govt view  
through GOs on priorities

Local accountability  
to citizens

Local priorities  
and targets

~35 targets

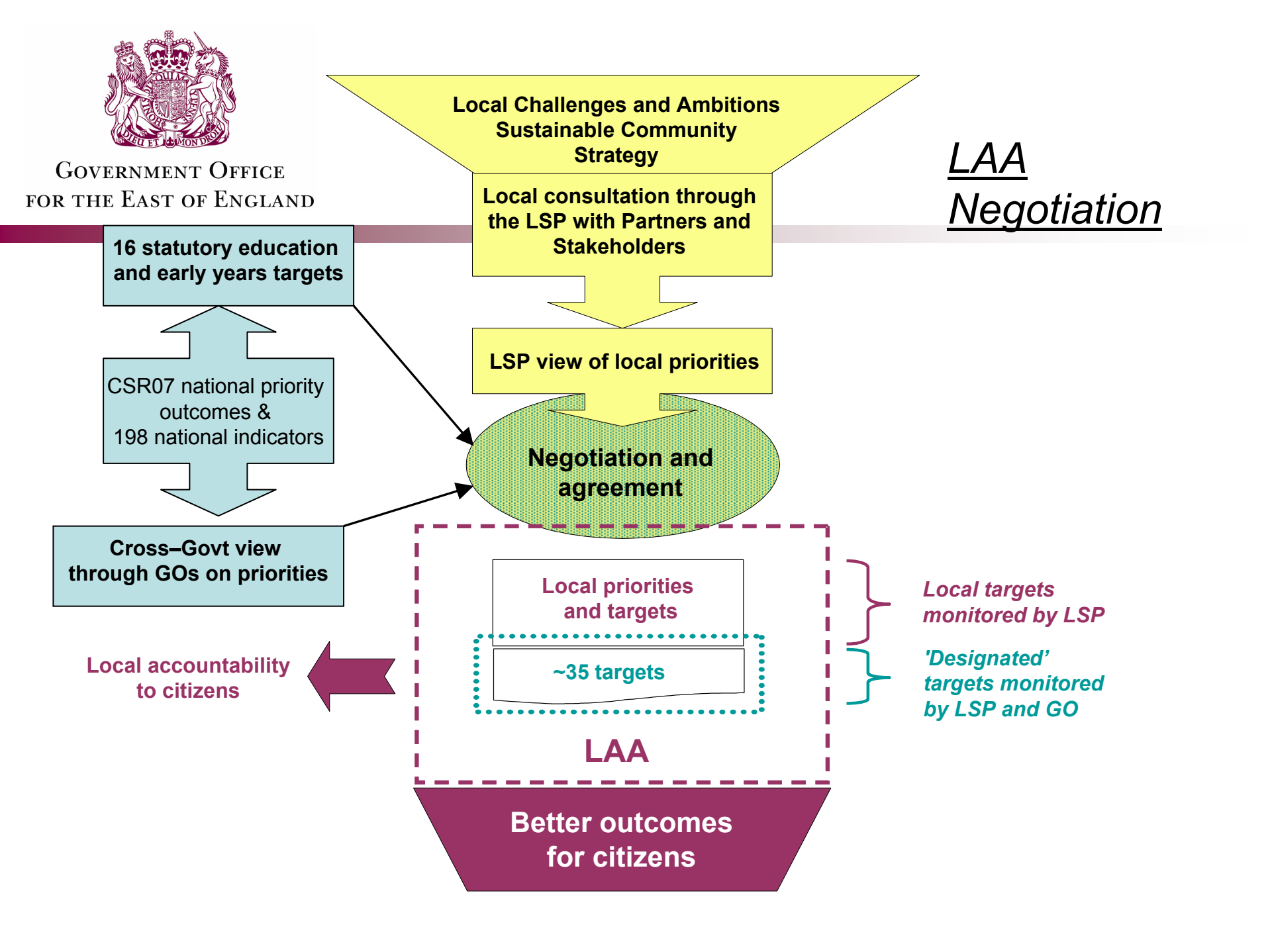
LAA

Better outcomes  
for citizens

LAA  
Negotiation

Local targets  
monitored by LSP

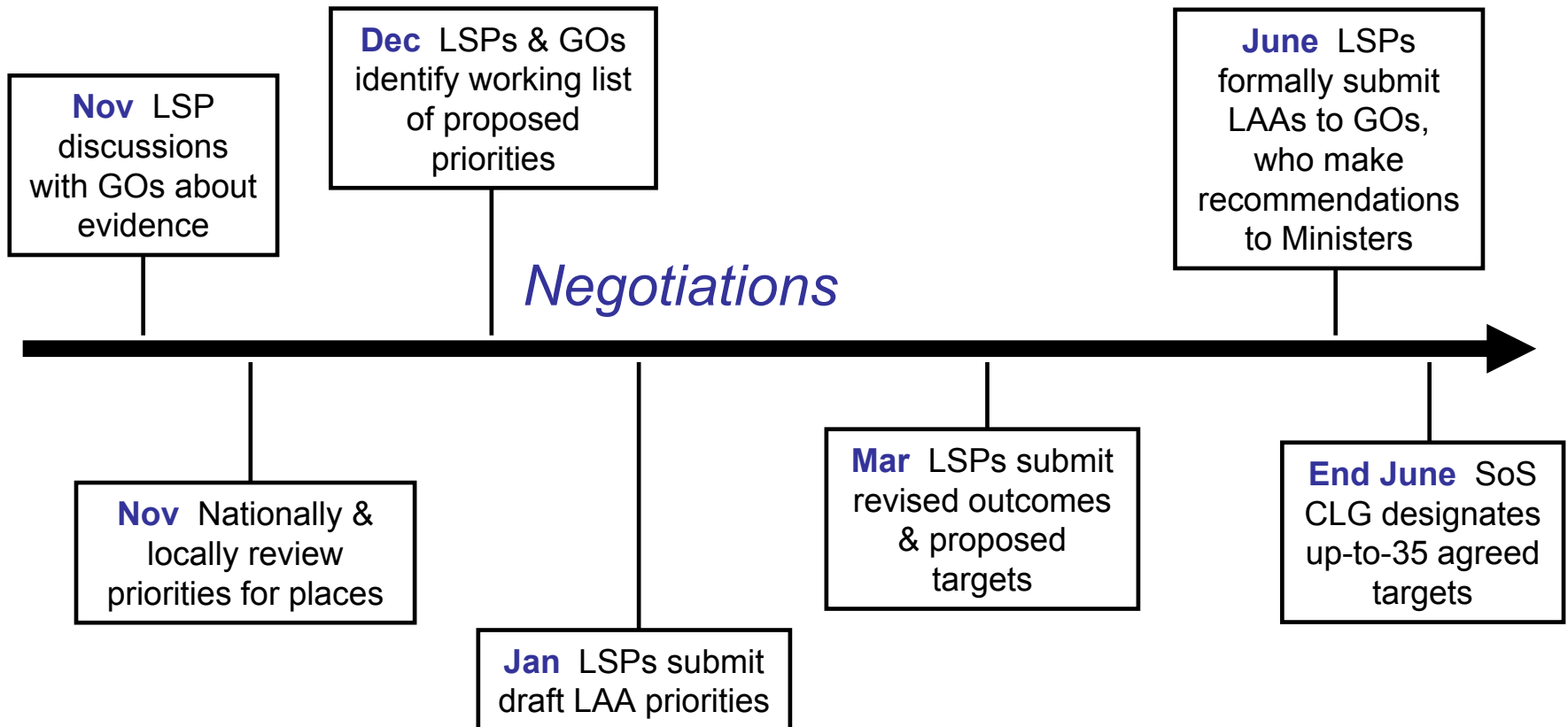
'Designated'  
targets monitored  
by LSP and GO





# Key Milestones

Shared evidence base key to underpin negotiations – but the LAA itself in legal terms will be just the collection of targets, with their trajectories.





# Key Challenges

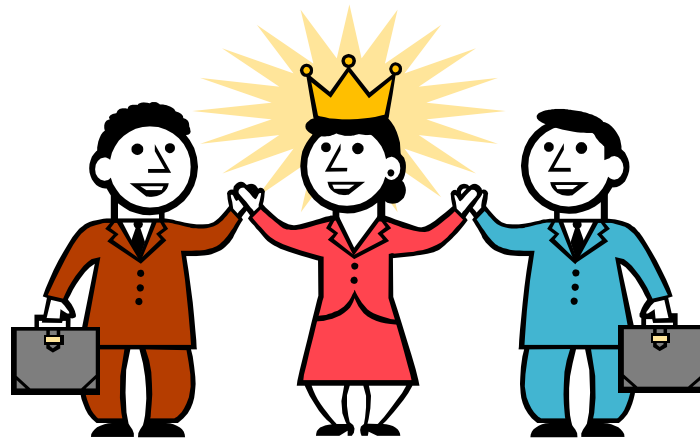
- Managing Whitehall expectations and telling the ‘story of place’
- Sound evidence base for indicator selection
- Diverse two-tier areas – keeping everyone happy!
- Target setting at most appropriate spatial level remains an important challenge and one that is critical in achieving ownership of the LAA at sub-county level



GOVERNMENT OFFICE  
FOR THE EAST OF ENGLAND

# The LAA 'prize'

A fundamentally new set of relationships between government, local areas and communities which secures better outcomes for local people.





GOVERNMENT OFFICE  
FOR THE EAST OF ENGLAND

# Opportunities to engage and influence

- Duty to co-operate places statutory duty on range of agencies to engage with LSP in setting targets and delivering them (includes English Heritage, Environment Agency, National Parks Authority, Broads Authority and Natural England)
- Too late to further influence Sustainable Communities Strategy priorities and the selection of indicators in each area, but can influence target setting
- Need to understand and be part of the partnership based decision making process, overseen by the LSP





GOVERNMENT OFFICE  
FOR THE EAST OF ENGLAND

# Rural Proofing

- Is the LSP able to address rural issues through its membership?
- Were rural groups/forums consulted on the Sustainable Community Strategy priorities?
- To what extent have district level SCS priorities been integrated into the LAA?
- Will the target setting process ensure that improvements for both urban and rural areas neighbourhoods are delivered?
- Are you intending to use the urban rural definition to support the LAA process and the measurement of its delivery achievements?



# The future

- LSPs currently reviewing governance and commissioning arrangements
- Need to understand and be part of the partnership based delivery mechanisms

## CAA

- Wider view of partnership delivery based on delivery of outcomes
- Annual risk assessment covering
  - LAA targets
  - National Indicator Set
  - Self-assessment
  - Views of stakeholders