

## East of England Regional Rural Forum

### The Importance of Broadband to Communities in Rural Areas

#### Better Broadband for Suffolk Vision

Frances Bedding  
Suffolk County Council

## The vision and strategy for Suffolk

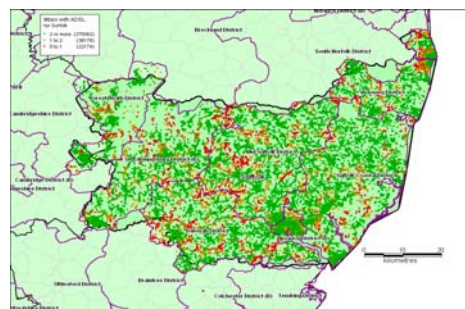
- Suffolk is ambitious for economic growth
- Our vision is to create a low-carbon, highly-skilled and high value-added economy
- Broadband is a key enabler of the New Anglia Local Economic Partnership vision and strategy for Norfolk and Suffolk:
  - broadband one of the top four priorities of the LEP
- The New Anglia LEP aims to act as a catalyst for change:
  - Focussing on key high-growth sectors such as: energy, creative, tourism, local food and drink, biotech and ICT
  - Suffolk's ambition is to be the 'Greenest County' and home to the UK's Green Energy Coast

Good quality broadband will be essential in achieving all of these aims

### Transformation of the delivery of public services in Rural Areas – what will better broadband help?

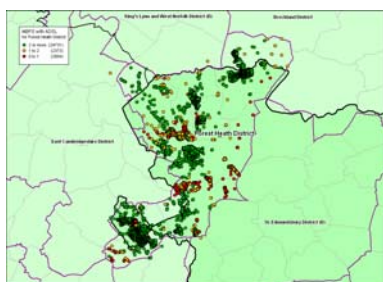
- **Better Learning** - universal high speed broadband access in homes so that pupils can access learning resources outside school
- **Better Care** – tele-medicine and telecare will enable elderly people to stay in their homes longer, while receiving the help and care they need online. People with long term illnesses will be able to monitor their conditions more effectively to enable better control and prevention of complications
- **Better Policing** - the rapid co-ordination of emergency services and on-the-scene access to vital information in remote rural areas – leading to better outcomes
- **Better Environment** - the ability to communicate, do business, be entertained and buy online will help to reduce unnecessary travel and help to deliver a greener environment through reduced carbon emissions
- **Better Communities** - empowering each local community to design the public services they need and to communicate more effectively

## ADSL Broadband Coverage in Suffolk



Source: Samknows/BT

### ADSL Broadband Coverage in Forest Heath District



Source: Samknows/BT

### The plan for Better Broadband in Suffolk

- Our ultimate vision is for the competitive provision of Superfast Broadband (both fixed and mobile), offering typical speeds of 100Mbps, to everyone (100% of homes and small businesses) in Suffolk by 2020
- We are planning to get Superfast Broadband (20Mbps+) to most premises (~85%) by 2015, with the remaining ~15% also getting a significant improvement in broadband speeds (2Mbps – 10Mbps) by 2015
- Our plan assumes a predominantly fibre-based solution (a mix of fibre-to-the-premises (FTTP) and fibre-to-the-cabinet (FTTC)) to ~85% by 2015, with interim solutions (mostly Fixed Wireless Broadband, but also some Satellite Broadband) serving the remaining ~15% also by 2015.

### The key issues and next steps for Suffolk

- Securing local funding to support the Suffolk Local Broadband Plan (SCC Cabinet meeting 10<sup>th</sup> June 2011)
- Securing funding to support the plan from BDUK (decision due July 2011)
- Selecting an operator through a competitive procurement process (BDUK Framework + Local Mini-competition) – by April 2012
- Co-ordinating a deployment plan with neighbouring counties (particularly Norfolk, as part of the New Anglia LEP)
- Deployment to start from Q2 2012

Suffolk Local Broadband Plan

