

Juliet Johnson
CRC Economies Team



and

Will Aston
DWP Rural Financial Inclusion Champion





CRC Reporting the Rural Recession

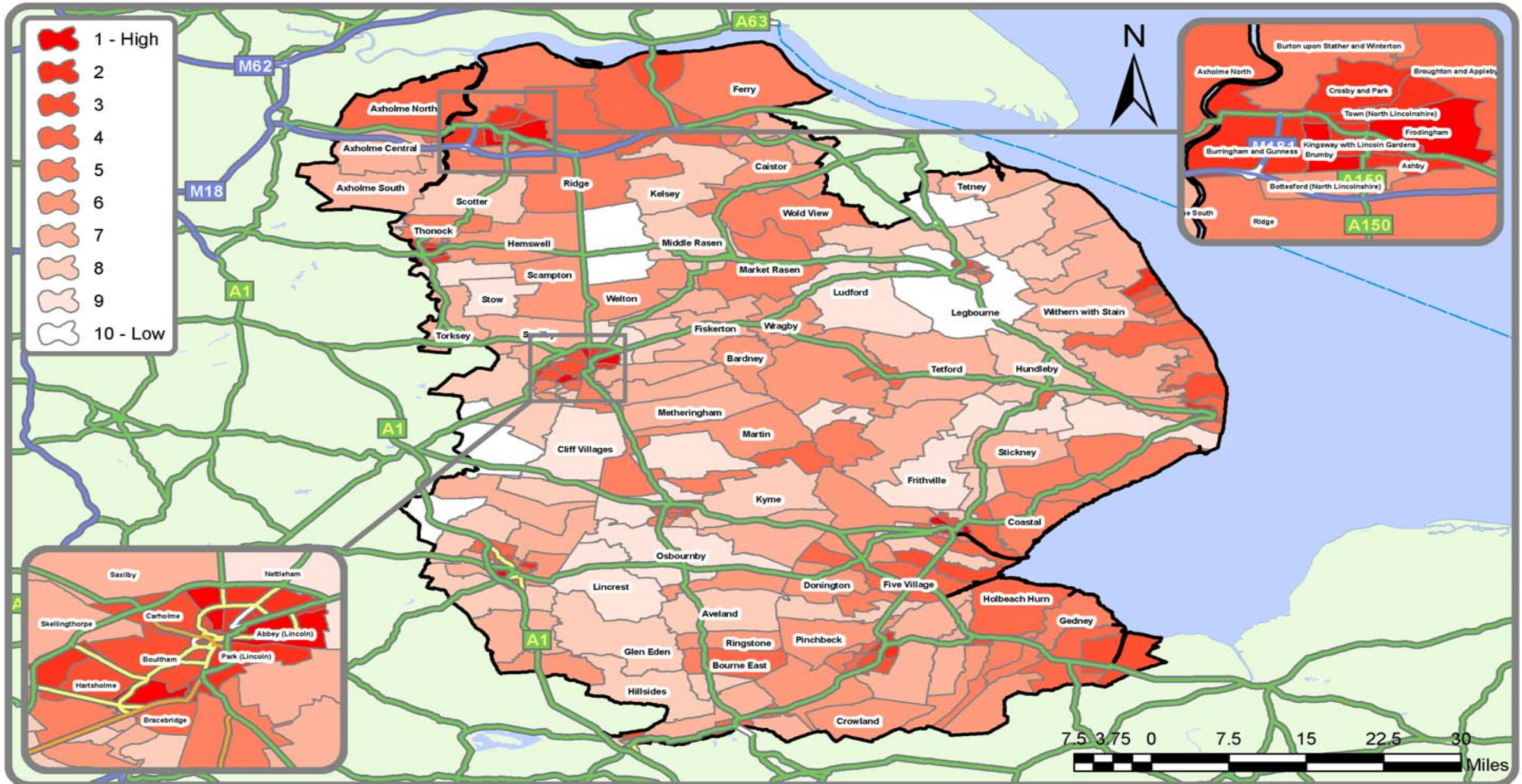
- Monthly reports to Hilary Benn, MP for NEC meetings
- Intelligence on impacts (and solutions) drawn from data, submissions and local/business media
- Intelligence on rural labour markets, businesses, housing and consumers – monthly cycle
- Working with RDAs, BERR & Defra to strengthen rural in regional reports
- These reports capture your members' experience and we need to keep this flowing, please

Financial inclusion

Financial inclusion can be defined as the ability of individuals, groups and communities to **access** and **use** appropriate and affordable personal, business and organisational financial products and services.

Lincolnshire

Wards colour-coded by their level of mis-match in financial exclusion and affordable credit supply



The way forward

- The Government has committed £130 million through the Financial Inclusion Fund between 2008-11
- Local authorities have a lead role in developing and coordinating local financial inclusion strategies which deliver over the long-term
- £12m funding is supporting the recruitment of 19 Financial Inclusion Champions teams to support local financial inclusion partnerships, promote good practice and provide strategic advice and guidance.