

The Qualifications and Credit Framework: The regional aspect



QCF animation



Why Skills, why QCF?

- Skills are part of success – for the economy, for society and for individuals
- The smartest countries will be the most creative
- The jobs of the future will be different – rural setting
- Vocational work is knowledge work – so we need to think again about qualifications

Qualifications - QCF

- New design tools – units and rules of combination
- New approaches to teaching, learning and assessment
- Greater alignment with learner and employer needs
- Building critical employability and employment skills into learning and achievement
- Revising and refreshing qualifications as demand and skill sets change

Credit where credit's due

The new QCF currency and what it can do

- Recognise achievement
- Be used to build up achievement over time
- Drive ambition
- Support progression in learning and at work
- Exchange across national boundaries

Credits



QCF Vocational Qualifications Development Process

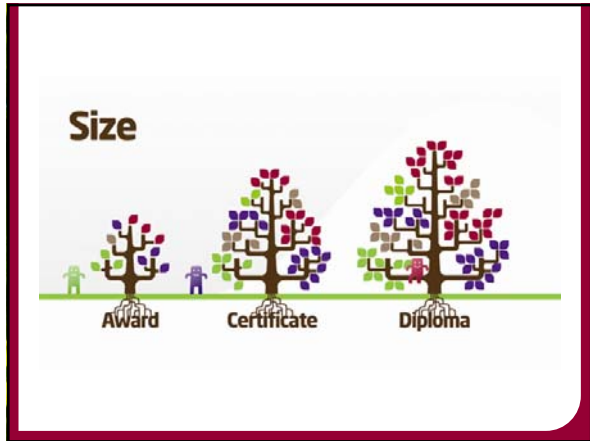
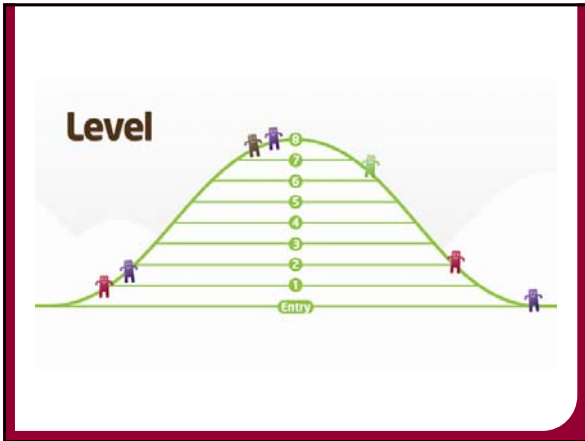


Learning Outcome	Assessment Criteria
1. Prepare for damaged trees operations	1.1 Select and wear personal protective equipment (PPE) 1.2 Check site for hazards 1.3 explain the legal and Environmental considerations when dealing with damaged trees 1.4 Prepare the site to work on damaged trees 1.5 Prepare chainsaw for operation
2. Sever individual uprooted trees using a chainsaw	2.1 describe tension and compression in timber when severing root plates 2.2 Sever the root plate from stem using appropriate cuts 2.3 explain when it is appropriate to use aid tools when severing root plates 2.4 Leave root plate in safe condition
3. Restrain root-plates on individually uprooted trees using a hand operated winch	3.1 Select and inspect winch and ancillary equipment 3.2 Inspect uprooted tree, site and anchor point(s) and comment on system to be set up 3.3 Attach winch cable to uprooted stem using strop or choker in appropriate position and configuration 3.4 describe when offset winching should be used and additional precautions required 3.5 describe the suitability of snatch blocks/pulleys 3.6 Sever tree from root plate 3.7 De-tension and dismantle the winch system and make tree and root plate safe

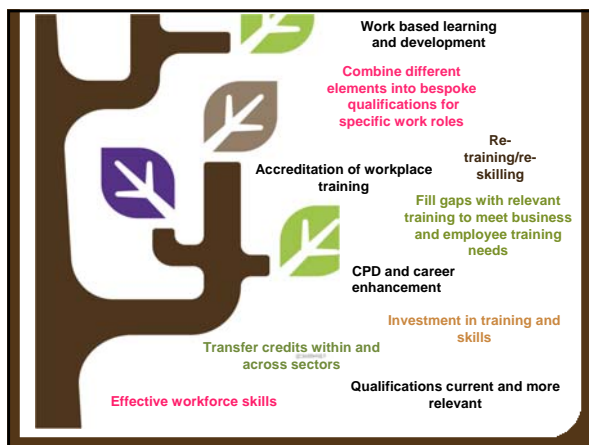
NPTC Level 2
Award in
Techniques for
dealing with
Damaged Trees
(QCF)

Unit: Techniques
to work with
Damaged Trees

Credit Value: 3
credits



- ### Progress to date cont...
- 2869 live QCF qualifications – 12th February 2010
 - 130 fall within sector 03 Agriculture, Horticulture and Animal Care – 15th February
 - 120 events - engagements reaching over 8,500 people
 - FAB/JCO workshops oversubscribed
 - Alliance – Technical and field based workshops oversubscribed
 - LSIS, AOC, ALP – Provider readiness support
 - Communications evaluation – all respondents “valued QCF communications materials”



QCF Myth Buster

The Regulatory arrangements for the QCF set out the rules on how units and qualifications should be designed

QCF Myth	QCF Fact
Pick and mix of units	All units in the QCF are submitted to the databank •All units are only active once they have been included in the RoC of a qualification •All units are attached to a full qualification •All qualifications are developed in collaboration by SSCs and ADs so they are coherent and fit for purpose
Leads to atomisation of assessment	The QCF regulations state that all units need to be capable of individual assessment but it is not the intention of the regulator that this happens other than when a single unit is being delivered and assessed in the absence of other units or a qualification.
Only for adults	•The QCF does not prescribe age ranges, it is not age specific. •The QCF is an organising structure •Any qualification for any age group can be developed to the QCF •The QCF does not prescribe content
Only for qualifications in the lower levels	• The QCF includes levels entry through 8 • QCF units and qualifications can be developed at any of these levels

- ### Engaging learners and employers
- Business plans and strategy
 - Understand the opportunities *"what can be done not what can't"*
 - Use your expertise to drive demand for what you need
 - Build coherence into the approach to maximise benefits
 - Develop the capacity of your teams as well as your customers
 - Give QCF learning something different – and make it special!

More information

Visit the QCDA web page:
www.qcda.gov.uk/qcf

Subscribe to our QCF monthly e-update:
www.qcda.gov.uk/subscribe

For QCF Readiness support materials visit:
<http://www.qcda.gov.uk/22230.aspx>

Email QCF queries to:
qcfreadiness@qcda.gov.uk
harminder.talwar@qcda.gov.uk

Any questions

Thank you for your time